

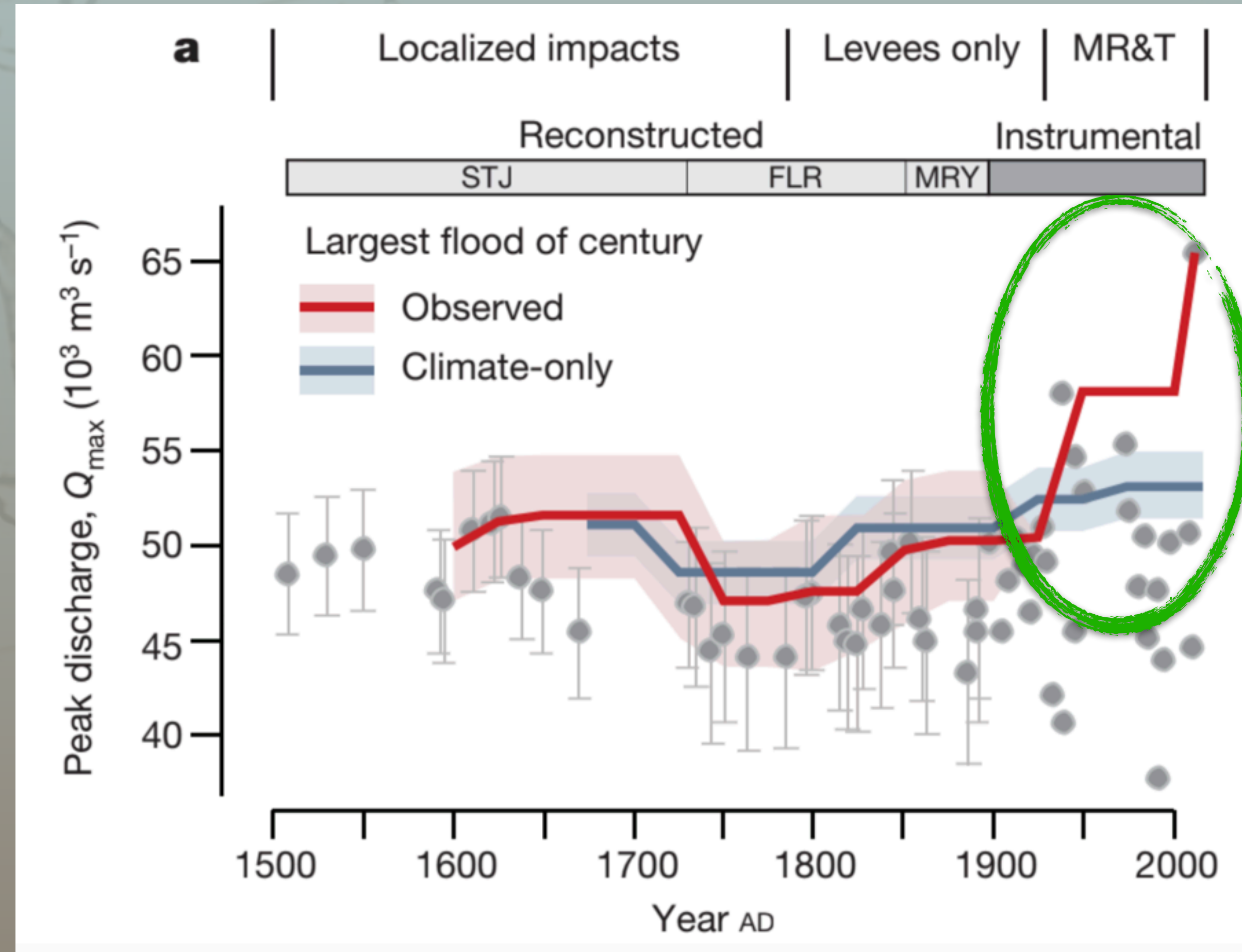
# **We Need Relief from Flooding Now**

## **Testimony by Kelley Williams**

Chair, Bigger Pie Forum  
Before The Mississippi River Commission. Greenville, Mississippi  
April 18, 2018

*Aboard the "Mississippi"*

# Are Flood Control Projects Making Flooding Worse?



Yes!





**GREENVILLE**  
531

**VICKSBURG**  
435

**NATCHEZ**  
383

**OLD RIVER  
CONTROL  
COMPLEX**  
313

**BATON ROUGE**  
228

**NEW ORLEANS**  
102

**Bottleneck**

**MORGAN CITY**



# Lake Mary Drilling Platforms



**December 2, 2011**

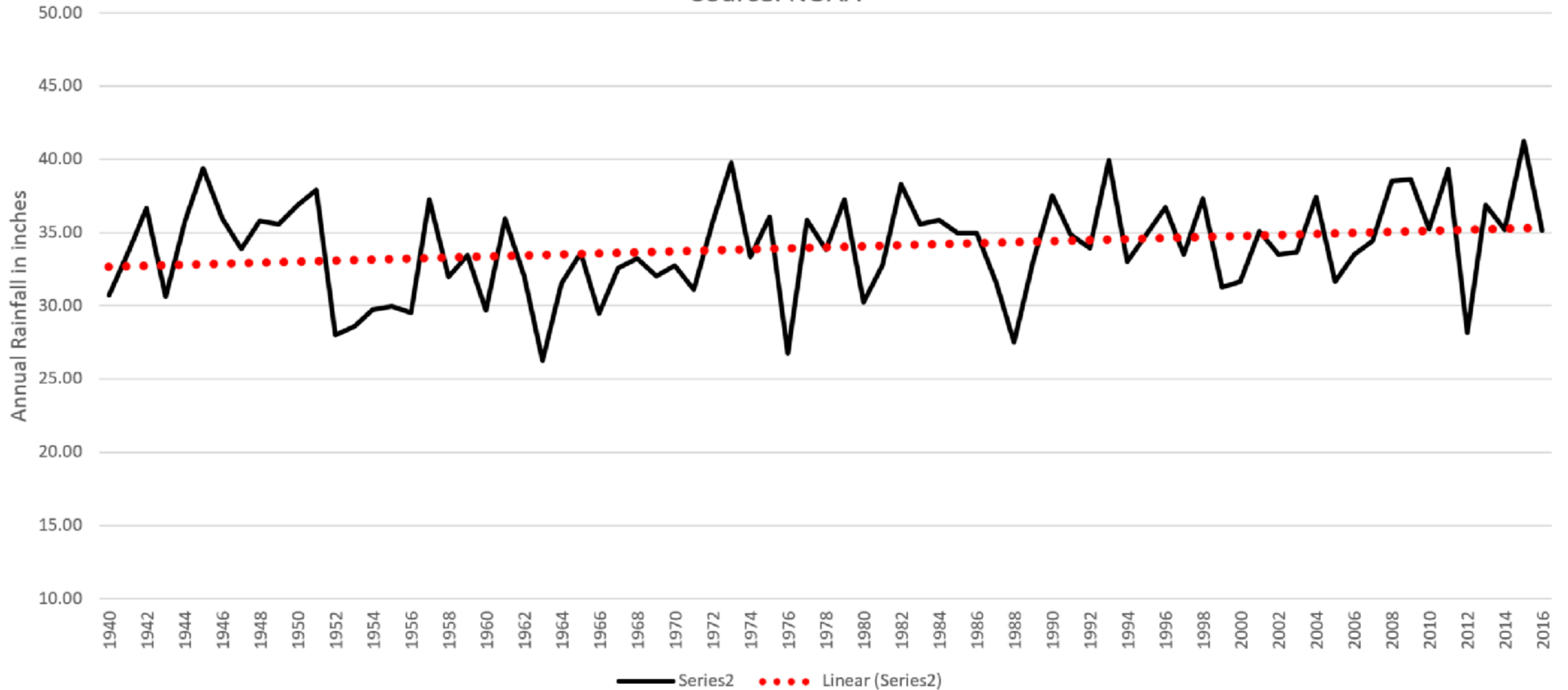


**April 5, 2018**



# Annual Rainfall | MS River Drainage Basin (OH, MO & MS)

Source: NOAA







May 13, 2011

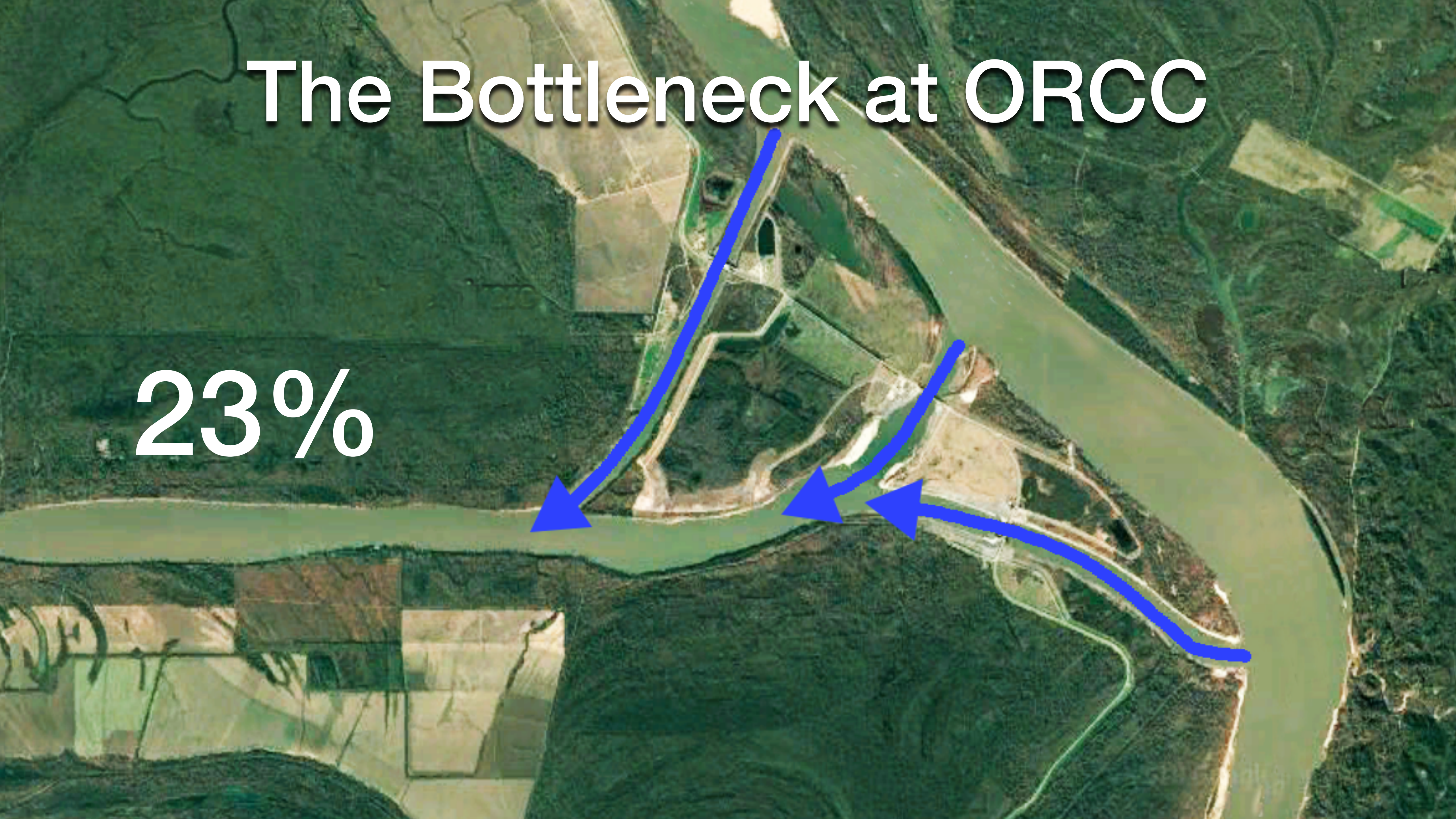
Lake Mary Batture

*House is 12 feet off the ground*



# The Bottleneck at ORCC

23%





# 1950-1959

- 1 of 10 yrs above flood stage
- 46 days above flood stage
- 2.7 ft median low stage

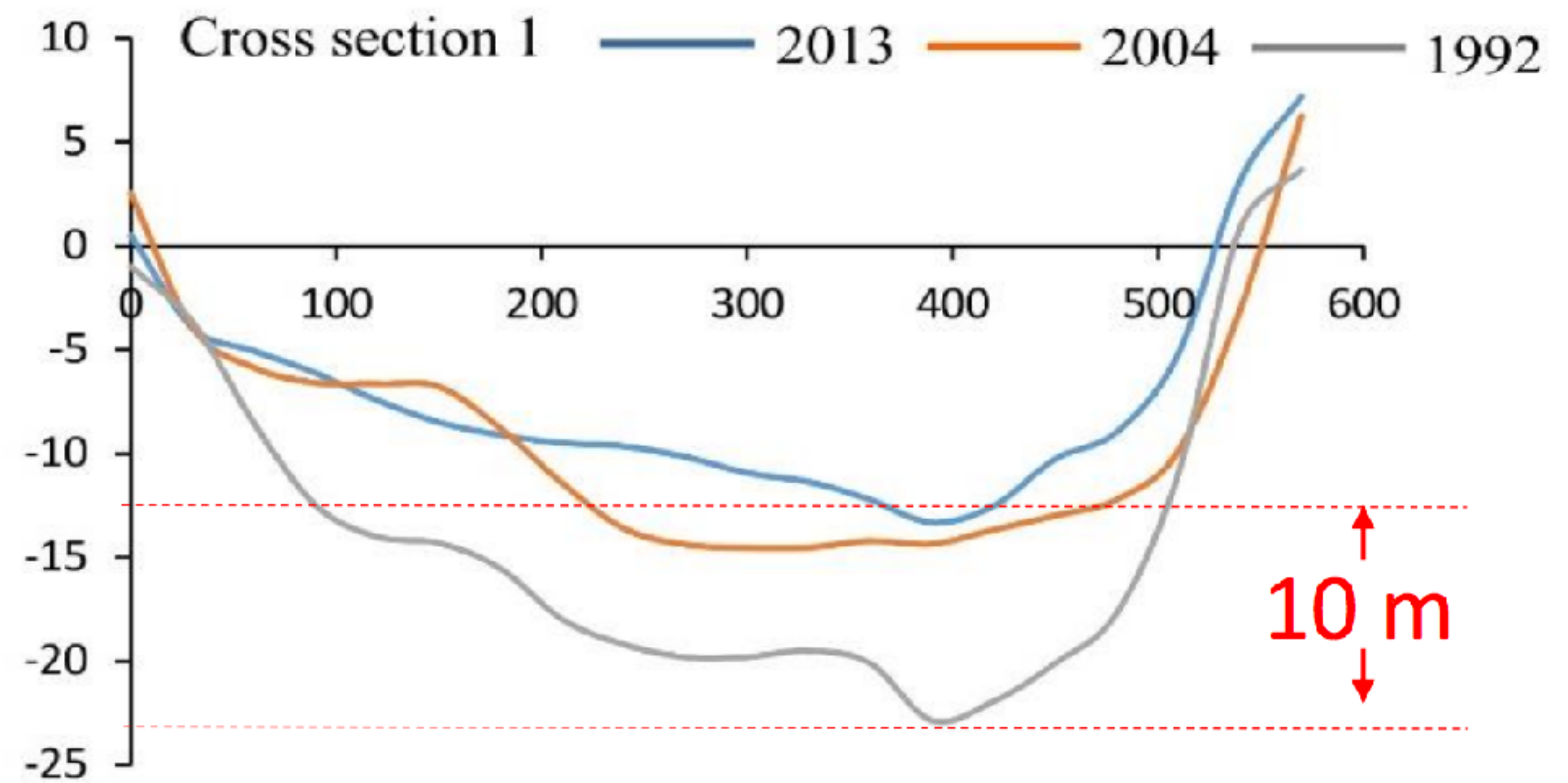


# 2008-2017

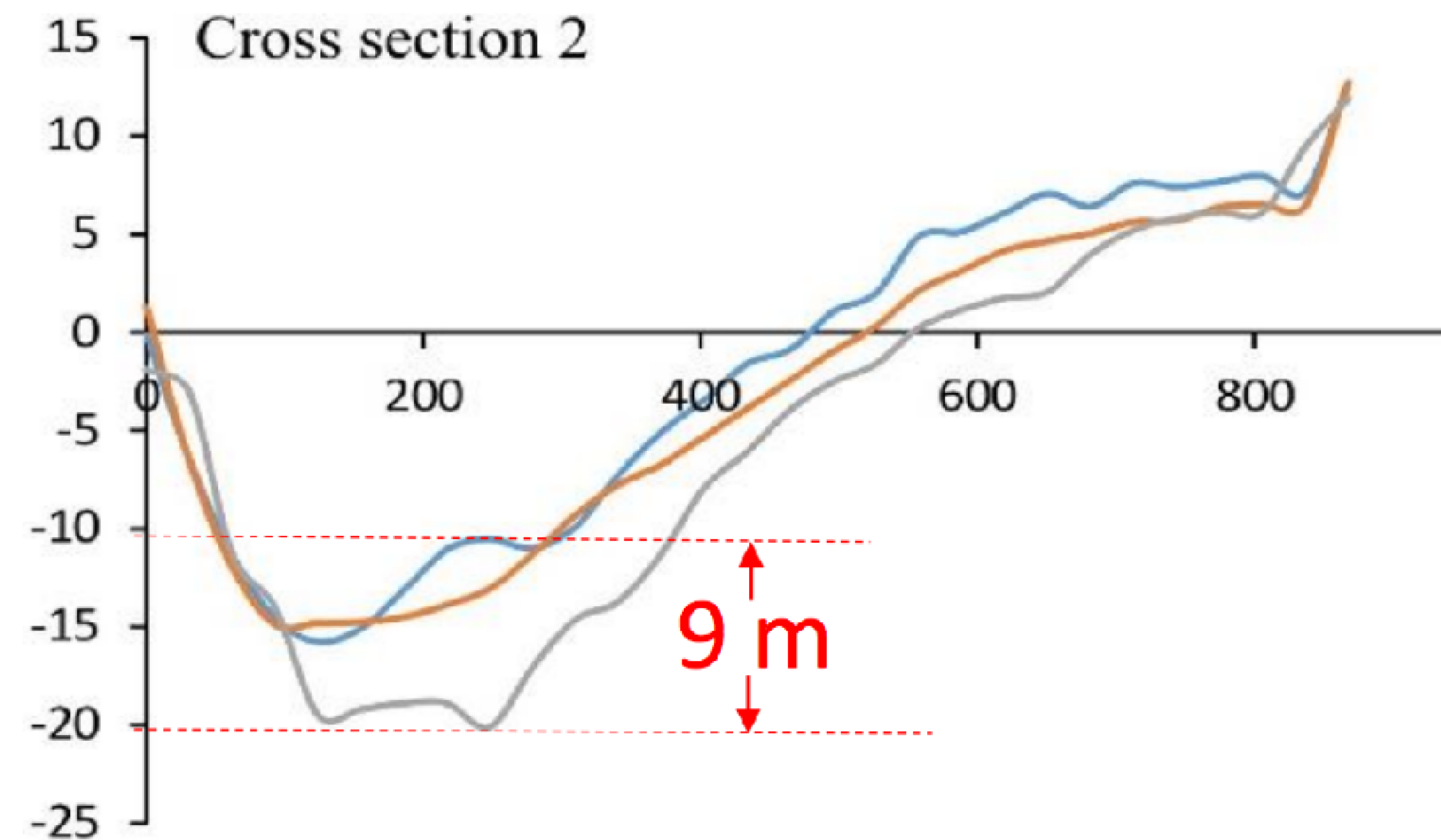
- 8 of 10 yrs above flood stage
- 388 days above flood stage
- 14.9 ft median low stage



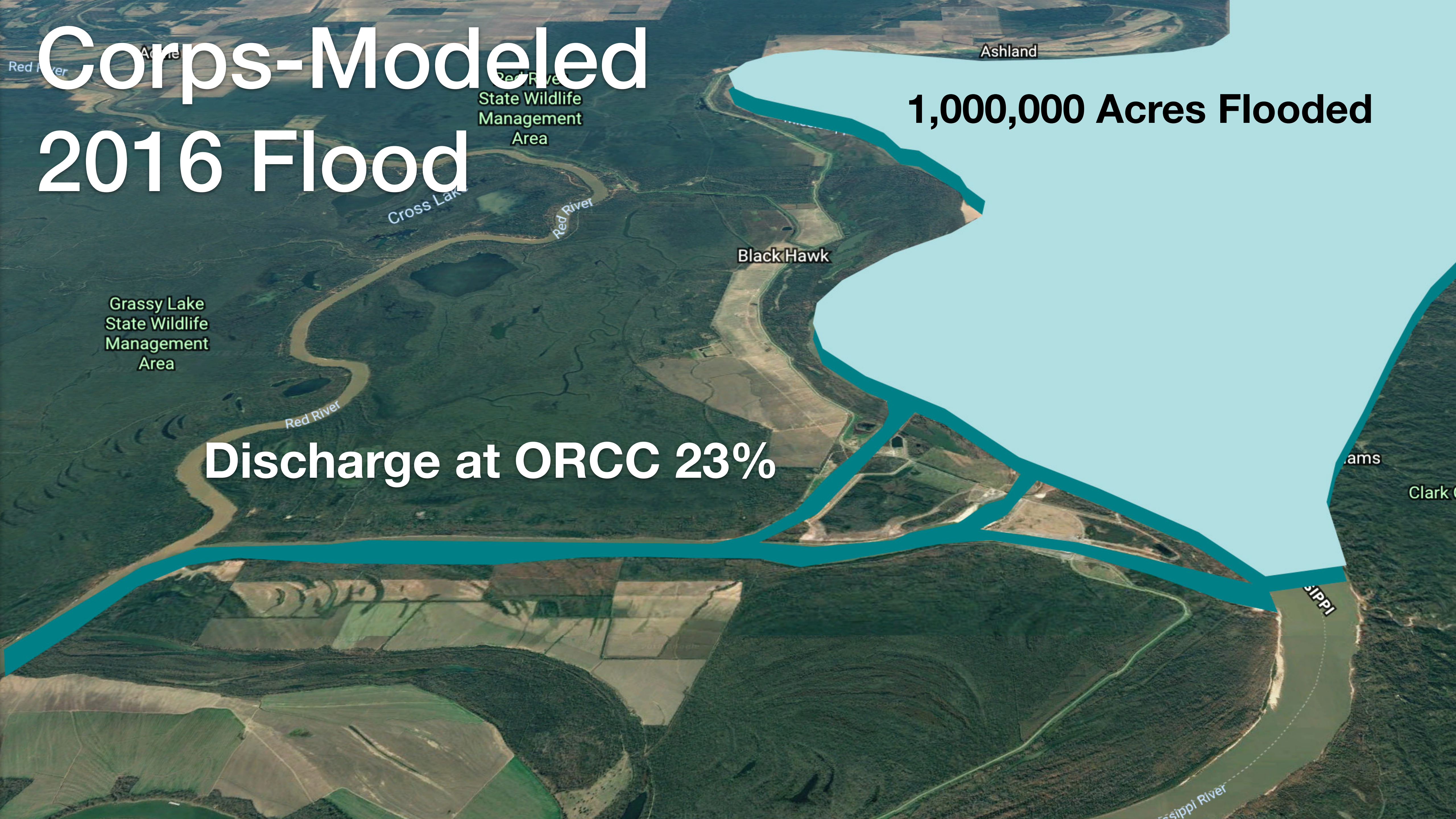
The channel  
below  
ORCC has  
clogged up



Source: Dr. Jun Xu, Professor of Hydrology, LSU 2017





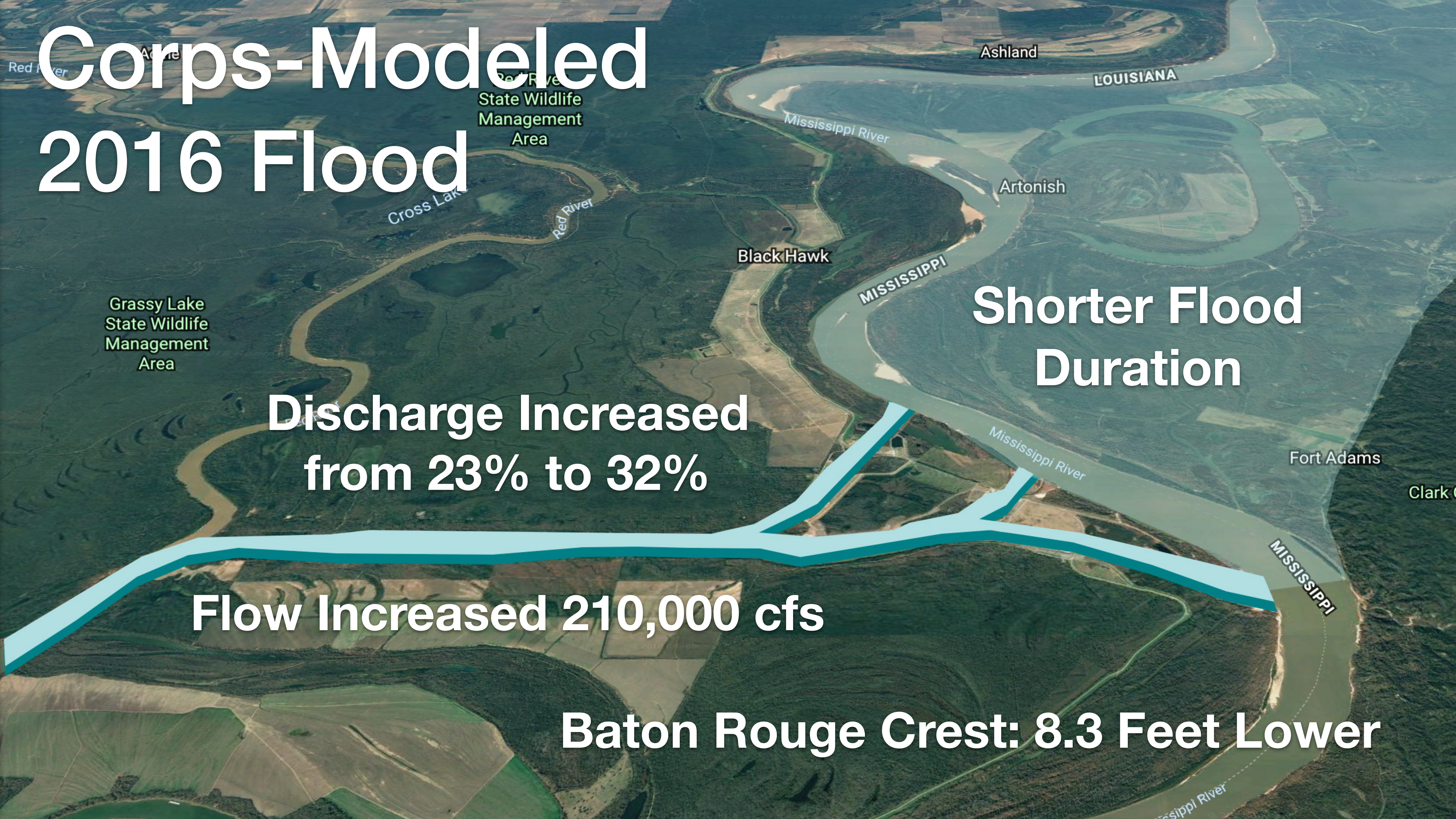


# Corps-Modeled 2016 Flood

**1,000,000 Acres Flooded**

**Discharge at ORCC 23%**





# Corps-Modeled 2016 Flood

**Shorter Flood  
Duration**

**Discharge Increased  
from 23% to 32%**

**Flow Increased 210,000 cfs**

**Baton Rouge Crest: 8.3 Feet Lower**



# <sup>Natchez</sup> The Democrat

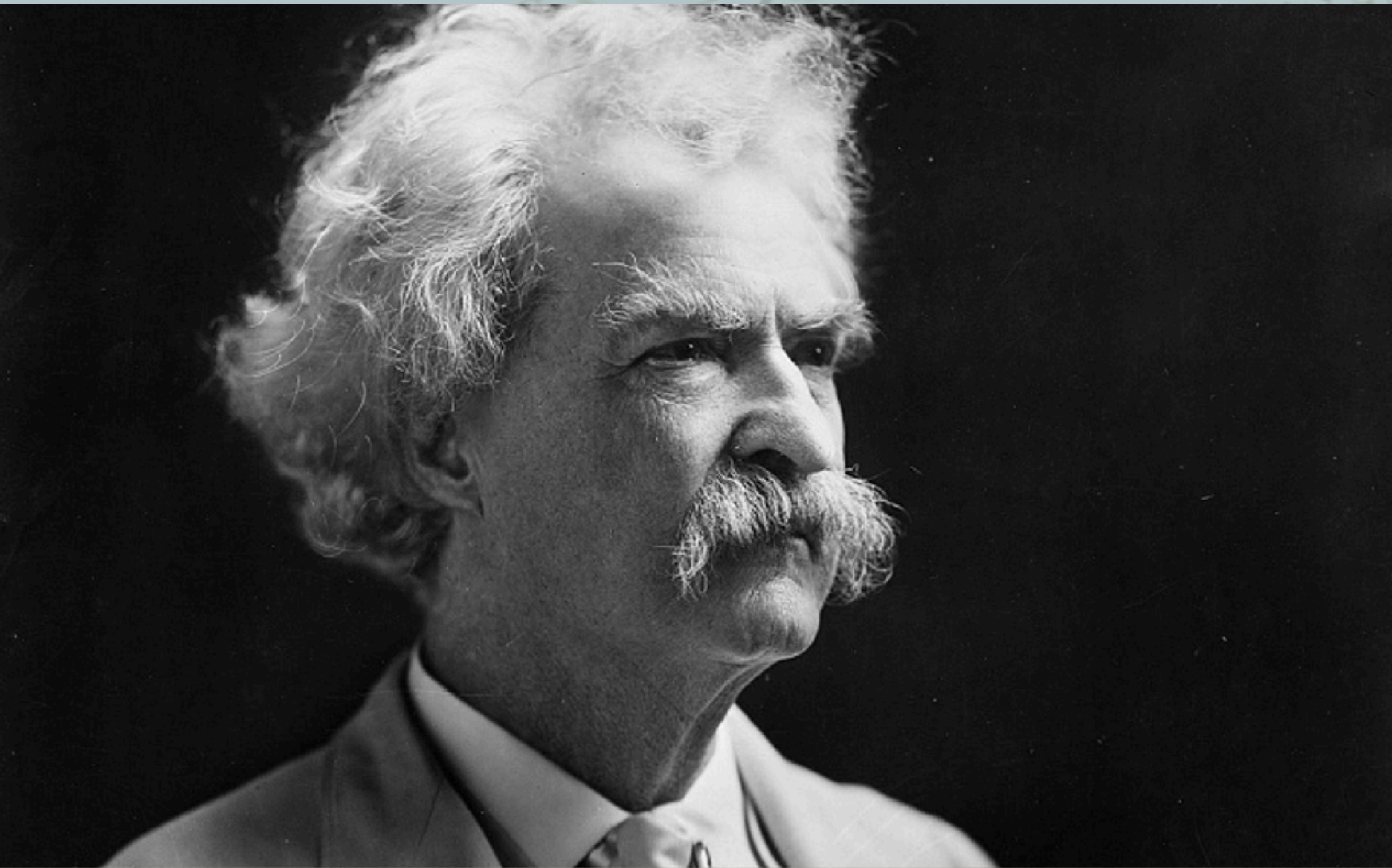


**Mississippi River:  
Under or out of control?**

**Sunday Focus: Recent floods have  
sparked fierce debate about control  
of Mississippi River**

But Camillo and Windham said the system is operating efficiently and do not claim the Corps' Mississippi River and Tributaries Project, authorized by Congress to prevent flooding in the lower Mississippi Valley, has saved areas along the river from damage.





**“THE REPORTS OF THE  
OPTIMUM OPERATION  
OF THE ORCC ARE  
GREATLY EXAGGERATED.”**

"Politicians and diapers must be changed often, and for the same reason."



# We Need Relief Now

A photograph showing a flooded landscape. In the foreground and middle ground, several deer are standing on small, isolated patches of dry ground that are surrounded by water. The water appears to be quite high, reaching up to the trunks of some trees in the background. The sky is overcast and grey. The overall scene conveys a sense of displacement and the impact of flooding on wildlife.

Deer leaving Lake Mary's Loch Leven for higher ground  
Jan 9, 2016  
Photo by Mike Quirk.